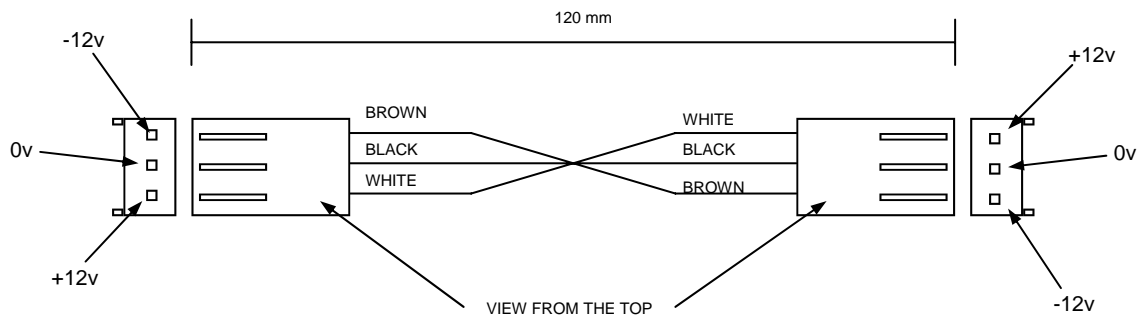
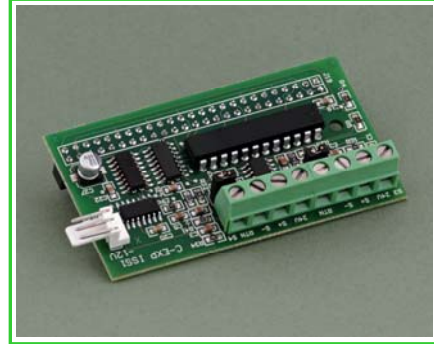
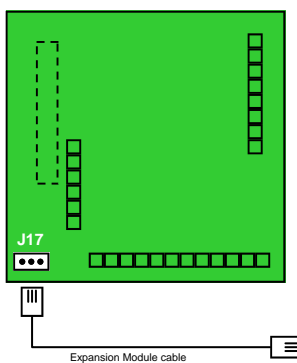


Power Cable VV-EM-PC

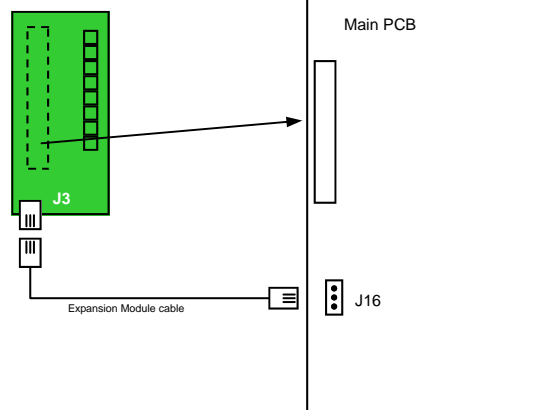
VV-EM-PC is used with the **VeroVent®** -01-B, -01-DD and **CaterSense®** controllers to power the additional expansion modules type VV-EM-01 & VV-EM-02.



VV-EM-01



VV-EM-02



Parts list

2 x	143-127 (housing)	Farnell
6 x	977-3789 (crimp)	Farnell
1 x	3 colour cable (br/bl/w)	In-house