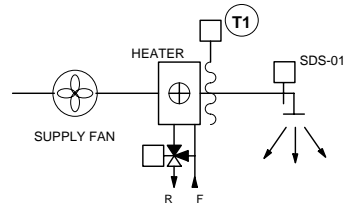
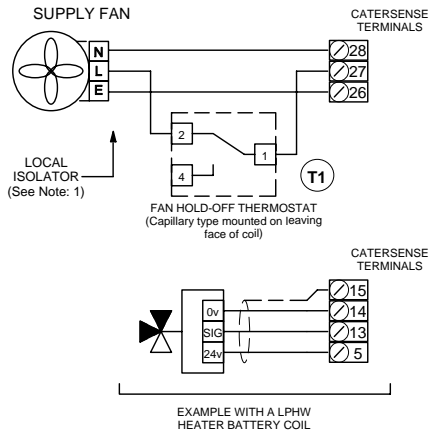
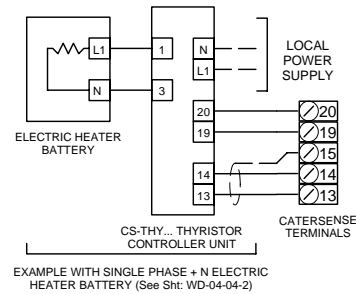


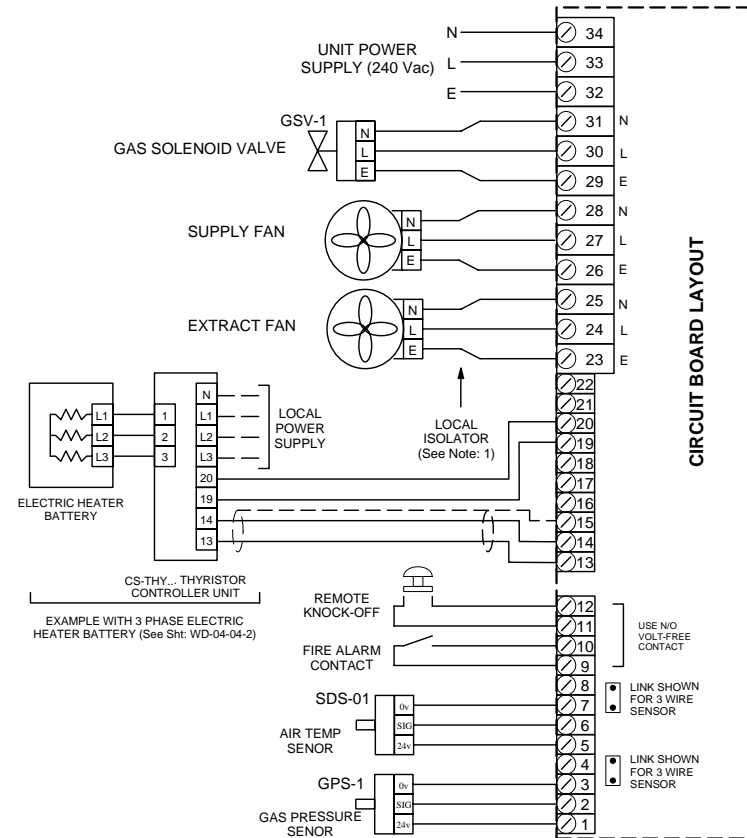
3 PORT LPHW HEATER BATTERY MIXING VALVE



ELECTRIC HEATER BATTERY SINGLE PHASE + N



ELECTRIC HEATER BATTERY THREE PHASE



NOTES:

- 1) LOCAL ISOLATION MUST BE PROVIDED IN ACCORDANCE WITH THE CURRENT EDITION OF THE IEE REGULATIONS.
- 2) CHECK MANUFACTURER'S WIRING DETAILS FOR CORRECT CONNECTIONS AND SET-UP REQUIREMENTS.
- 3) ENSURE THAT THE SWITCHED POWER IS CORRECTLY FUSED TO THE LOADING OF THE CATERSENSE AND PLANT ITEMS.

SCHEMATIC WIRING

TRENT PRODUCTS

Tel: 01782 - 844688 Fax: 01782 - 844772

IF IN DOUBT, ASK

**CATERSENSE -4 (04-07)
WIRING & CONNECTION DIAGRAM**

DATE:

05/01/06

DRAWING No:

**CATERSENSE - 4
WD-04-07-2**

DRAWN BY

MAE