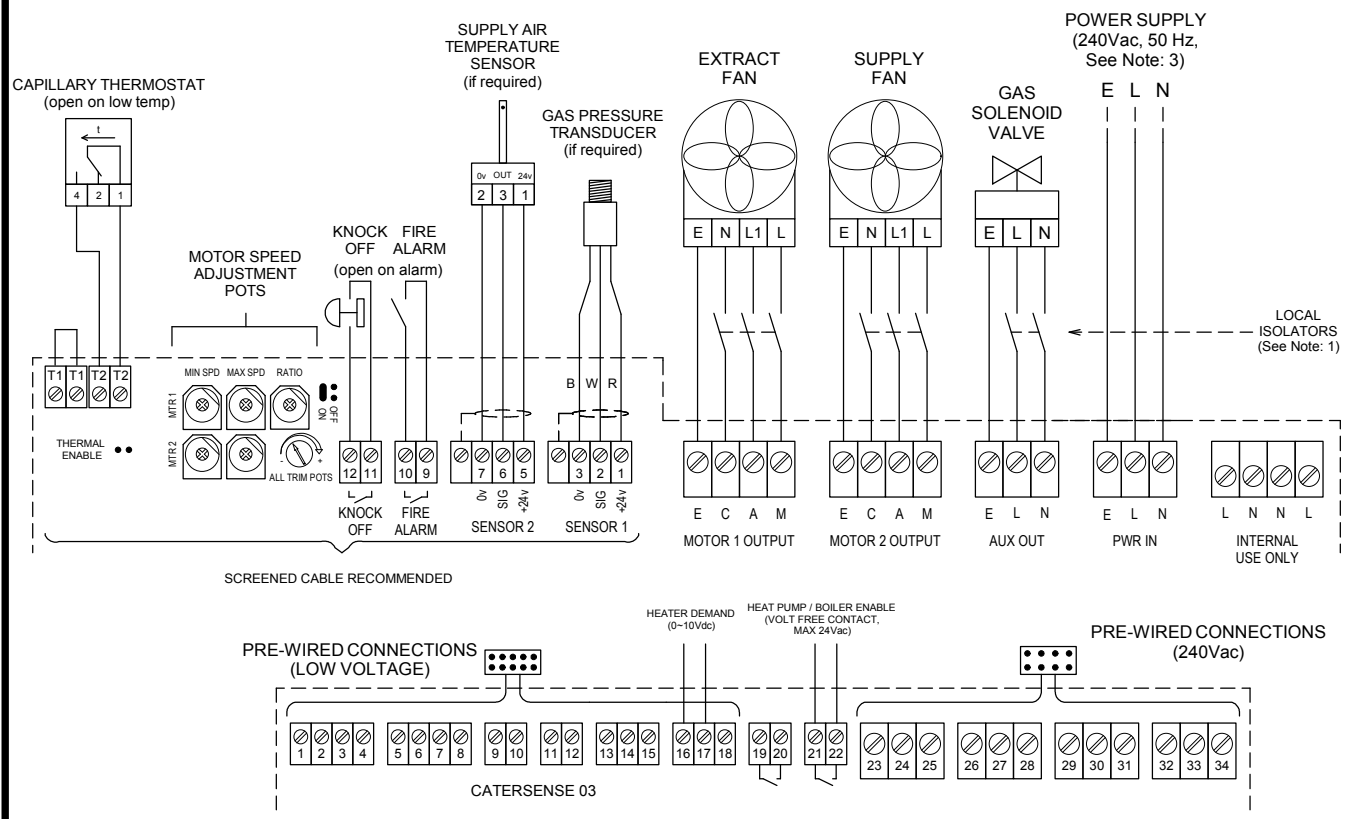
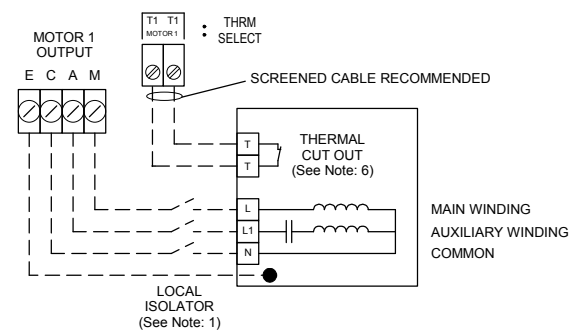


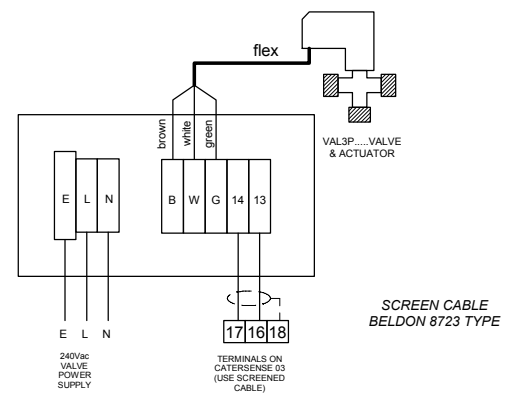
**CONNECTION DETAILS**



**TYPICAL WIRING ARRANGEMENT FOR A SINGLE PHASE MOTOR (3 WIRE - See Note: 5)**



**3-PORT VALVE ADDITIONAL CONNECTION BOX**



**NOTES:**

- 1) LOCAL ISOLATION MUST BE PROVIDED IN ACCORDANCE WITH THE CURRENT EDITION OF THE IEE REGULATIONS.
- 2) CHECK MANUFACTURER'S WIRING DETAILS FOR CORRECT CONNECTIONS AND SET-UP REQUIREMENTS.
- 3) ENSURE THAT THE POWER SUPPLY IS CORRECTLY RATED TO THE SIZE OF BOTH FAN MOTORS AND GAS VALVE
- 4) ENSURE THAT THE SWITCHED POWER IS CORRECTLY FUSED TO THE LOADING OF THE POWER MONITOR AND / OR GAS VALVE.
- 5) FOR MAXIMUM OPERATING EFFICIENCY, MINIMUM NOISE, AND REDUCED RUNNING CURRENTS, THREE WIRE CONTROL OF SINGLE PHASE MOTORS IS STRONGLY RECOMMENDED BY TRENT PRODUCTS AND MOST MOTOR MANUFACTURERS
- 6) MOTOR THERMAL CUT-OUTS (IF PRESENT) SHOULD BE EITHER CONNECTED IN SERIES WITH POWER WIRING, OR CONNECTED TO T1 OR T2 TERMINALS ON SPEED CONTROL PCB

**TRENT PRODUCTS**

**TWIN SPEED CONTROLLER WIRING & CONNECTION DIAGRAM**

Tel: 01782 - 844688 Fax: 01782 - 844772

**DATE:**

05/06/08

**DRAWING No:**

ATSC-08-02-WD01

**DRAWN BY**

RR